



1570nm 5mW DFB Coaxial Pigtailed Laser Diode with 9um SMF | Built-in Isolator

1570nm SM Fiber Coupled LD with Single Mode Fiber (SM Fiber) | Built-in PD

WSLP-1570-005m-9-DFB

Wavespectrum Laser Group

www.wavespectrum-laser.com

PARAMETER	SYMBOL	VALUE	UNIT
LD Reverse Voltage	V_r	2.0	V
PD Reverse Voltage	$V_{r(PD)}$	15	V
Operating Temperature	T_{op}	-20~+50	°C
Storage Temperature	T_{stg}	-40~+100	°C
Lead soldering temperature (10 sec.)	T_{is}	260	°C

Features:

- 1570nm
- DFB Laser Diode
- Built-in Photodiodes
- 9um SM Fiber
- Built-in Isolator
- Coaxial or B85 Package

Applications:

- Test Equipments
- Optical Transmitter of Analog Signal
- Optical Transmitter of Data Signal



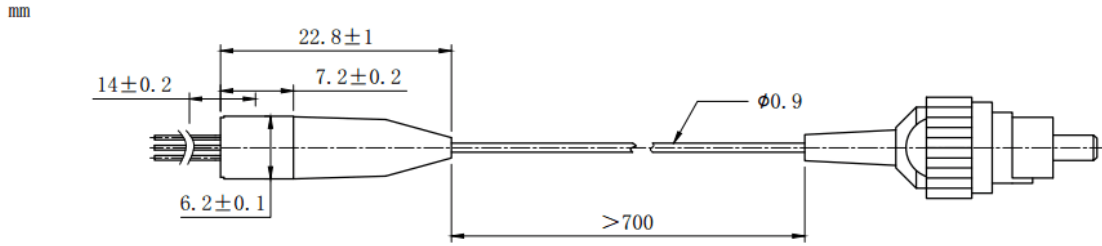
Specifications

WSLP-1570-005m-9-DFB

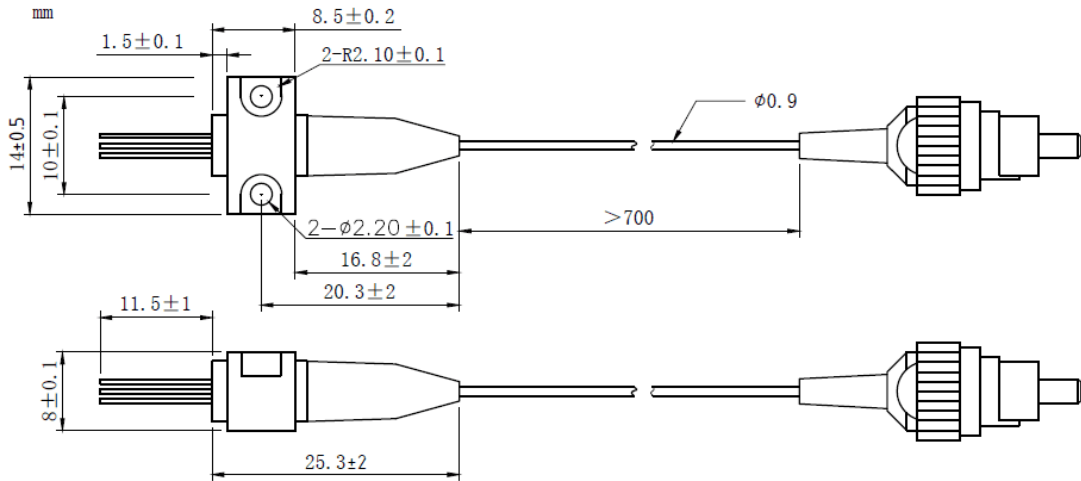
	Min	Type	Max
Center Wavelength@25°C	±3nm	1570nm	±10nm
Laser Type	DFB		
Output Power	----	5mW	----
Fiber Core	9um SM Fiber		
Threshold Current (Typ.) I_{th}	----	5mA	15mA
Operating Current	----	70mA	80mA
Operating Voltage	----	1.4V	1.7V
Spectral Width (FWHM)	----	0.3nm	1nm
SMSR	----	35dB	----
Monitor Current	0.1mA	----	----
PD Capacitance	----	10pF	20pF
PD Dark Current	----	----	0.1uA
Optical Isolation	----	30dB	----
Package Style	Coaxial or B85		
Recommended Operation Temperature	25°C		
Connector	FC/SC/SMA905		



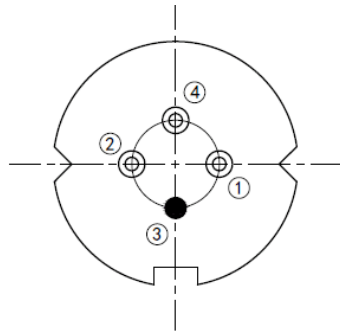
Coaxial Package View: (Part Number: WSLP-1570-005m-9-DFB)



B85 Package View: (Part Number: WSLP-1570-005m-9-B-DFB)



Bottom View: (A-Type)



PIN 1	PD(+)
PIN 2	LD(-)
PIN 3	LD(+), CASE
PIN 4	PD(-)



**Electrically shorten LD module and store in non-extreme conditions.
Suggest using the constant current power supply.**

