


**1450nm 5mW Pigtailed Laser Module with Polarization maintaining Fiber (PM Fiber)**

**1450nm PM Fiber Coupled LD Module with Coaxial Package (9um Single Mode PM Fiber)**

WSLP-1450-005m-PM-DFB

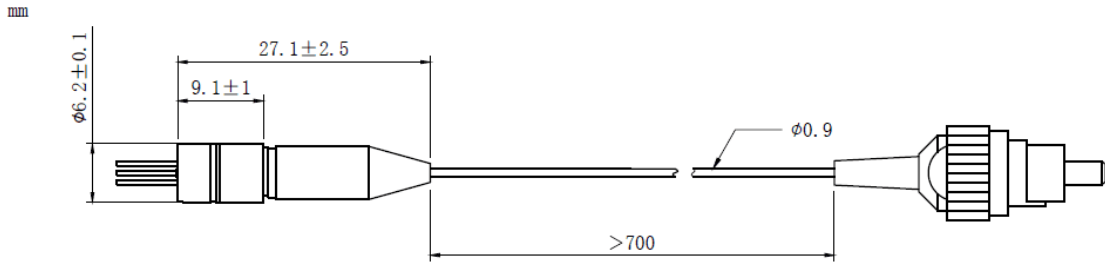
Wavespectrum Laser Group

www.wavespectrum-laser.com

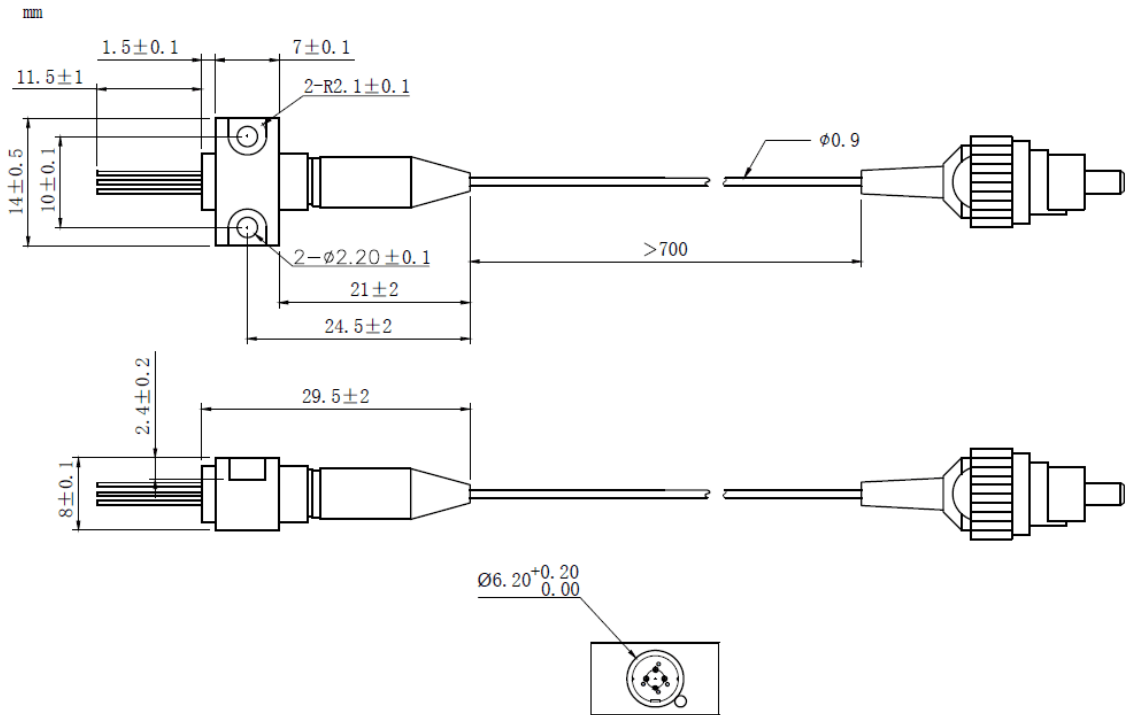
PARAMETER	SYMBOL	VALUE	UNIT	
LD Reverse Voltage	$V_r$	2.0	V	
PD Reverse Voltage	$V_{r(PD)}$	15	V	
Operating Temperature	$T_{op}$	-20~+50	°C	
Storage Temperature	$T_{stg}$	-40~+100	°C	
Lead soldering temperature (10 sec.)	$T_{is}$	260	°C	
<b>Features:</b> <ul style="list-style-type: none"> <li>● 1450nm</li> <li>● DFB Laser Diode</li> <li>● Built-in Photodiodes</li> <li>● Built-in Isolator</li> <li>● High Reliability</li> <li>● High Polarization Extinction Ratio</li> </ul>				
<b>Applications:</b> <ul style="list-style-type: none"> <li>● Test Equipments</li> <li>● Optical Transmitter of Analog Signal</li> <li>● Optical Transmitter of Data Signal</li> </ul>				
<b>Specifications</b>		<b>WSLP-1450-005m-PM-DFB</b>		
		<b>Min</b>	<b>Type</b>	<b>Max</b>
Center Wavelength@25°C		±3nm	1450nm	±10nm
Spectral Width(FWHM)		----	0.3nm	1nm
Output Power		----	5mW	----
Fiber Type	Polarization Maintaining Fiber			
Fiber Core	9um			
Recommended Operation Temperature	25°C			
Polarization Extinction Ratio	13dB	15dB	----	
Connector	FC/APC			
Threshold Current (Typ.) $I_{th}$	----	5mA	15mA	
Operating Current	----	70mA	80mA	
Operating Voltage	----	1.4V	1.7V	
Optical Isolation	30dB			
Fiber Length	>80cm			
Package Style	Coaxial or B86			
High Polarization Extinction Ratio (PER) Version Laser Module is also available, please contact us.				



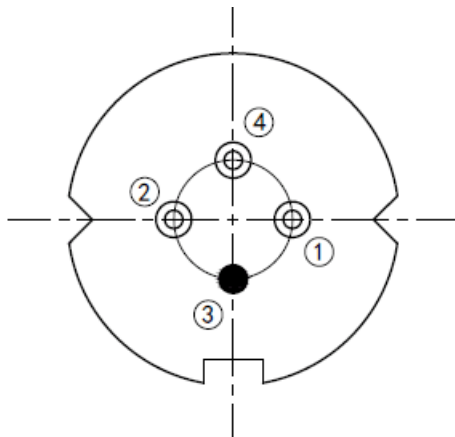
**Coaxial Package View: (Part Number: WSLP-1450-005m-PM-DFB)**



**B86 Package View: (Part Number: WSLP-1450-005m-PM-B-DFB)**



**Bottom View: (A-Type)**



PIN 1	PD (+)
PIN 2	LD (-)
PIN 3	LD (+), CASE
PIN 4	PD (-)



**Electrically shorten LD module and store in non-extreme conditions.  
Suggest using the constant current power supply.**

